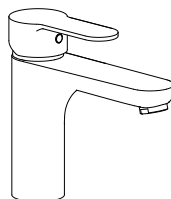
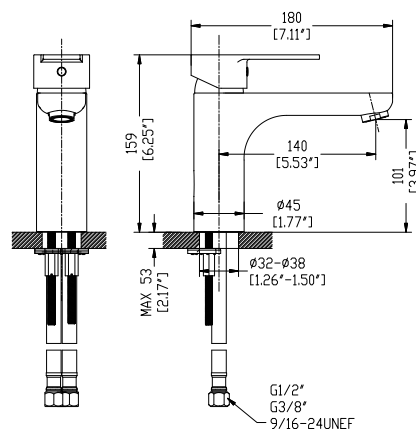


# PRODUCT TECHNICAL SHEET

## T90132 SINGLE CONTROL LAV FAUCET



### DIMENSIONS



■ For Reference only (unit = mm[inch])

### TECHNICAL DETAILS

Please read the followings before installing and usage.

#### 1 Description

- Metal handle
- Solid brass construction
- Ceramic disc Cartridge(Φ35MM)
- Without Pop-Up

#### 2 Technique Parameter

Parameter Market	Water Pressure	Water Temperature
ASME A112.18.1/ CSA B125.1	20-80PSI	10-65°C
EN817	0.1-0.5MPa	10-65°C
CNS8088	0.1-0.5MPa	10-65°C
GB18145	0.1-0.5MPa	10-65°C

#### 3 Certificate



AB1953

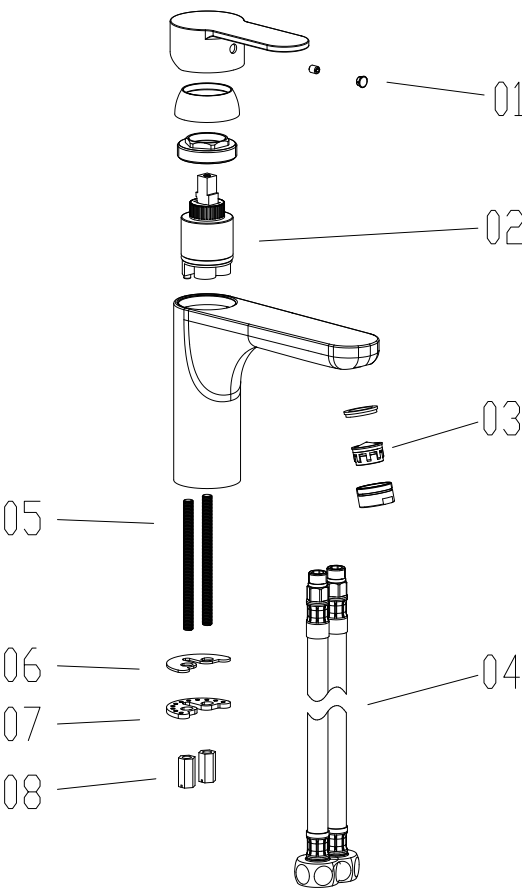


#### 4 Surface maintenance

Remove any surface dirt and film using clean water and cotton cloth.  
Spray cleaner such as mild liquid detergents, clear liquid glass cleaner, non-acidic and fully dissolved powder cleaners or non-abrasive liquid polishers on the rag to clean the faucet surface.  
Once clean, rinse faucet again with clear water to thoroughly remove cleaner and dry with soft cotton cloth.

### EXPLODED DRAWING

Please read the followings before installing and usage.



NO.	Description	Part No.	Qty
01	CAP	CTCP0072	1
02	CARTRIDGE	ATBA0096	1
03	AERATOR	ATBX0037	1
04-1	HOSE(G1/2)	ATBP0279	2
04-2	HOSE(G3/8)	ATBP0339	2
04-3	HOSE(6/19-24UNEF)	ATBP0256	2
05	SCREW	CTST0013	2
06	GASKET	CTWR0028	1
07	PACKING	CTWT0059	1
08	NUT	CTNB0063	2

■ Notes: For reference only. We reserve the right to make changes without any notice.